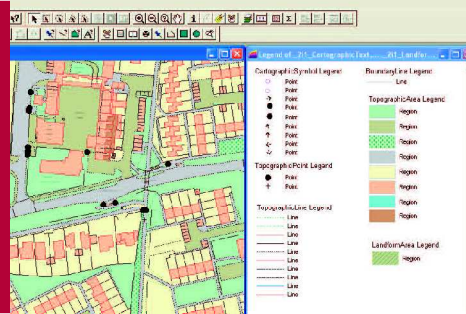


# MapInfo® Professional Version 8.0

Industry leading desktop solution for mapping and geographic analysis



Experience the power and boost productivity with MapInfo Professional v8.0

## NEW FEATURES

- Citrix deployment
- Remote and silent installation
- Thematic mapping enhancements
- Drawing and editing enhancements
- Increased node limit for polygons
- New vector, raster and data file formats: GML 2.1, DWG/DXF, DGN, CSV, GIF, SHP files w/z coordinates and more
- WMS and WFS enhancements
- Data versioning/Oracle workspaces
- Workspace resolver
- User interface enhancements

## KEY BENEFITS

- Easier deployment options for multiple users
- Improved data visualisation
- New analytical possibilities
- Easier and quicker drawing and editing
- Enhanced level of integration and interoperability
- Extensive options for data access
- Easier data management and workflow
- Improved ease of use

## Overview

With MapInfo Professional v8.0, the latest edition of the leading mapping solution for business analysts and GIS professionals, it is easy to map and extensively analyse your data. Through its extended breadth of capabilities, you can quickly gain a deeper insight and make better decisions.

### New Features and Functions

MapInfo Professional v8.0 offers new and enhanced features for greater flexibility, collaboration and value.

### Increased Flexibility

As more is being demanded from you, any opportunity to work more efficiently and with greater quality is valuable. Version 8.0 helps you with:

- New data creation and analytical capabilities including stream digitising, orthogonal polygon creation, bivariate thematic analysis and an enhanced distance calculator
- Increased settings in geographical object support – now objects can store over 134 million nodes per single polyline or polygon object
- New legend size options and cartographic legend window formatting

### Greater Collaboration

MapInfo endorses industry standards and promotes interoperability. This allows information to be shared freely across the organisation and translation costs to remain minimal. Version 8.0 helps you share your work with others through enhanced MapInfo Workspace and extended OGC support.

Improvements to our WMS and WFS capabilities include:

- Resolution control of downloaded WMS images (for better printing)
- Support for proxy servers with passwords
- Improved WFS data refreshing – it is now easier to refresh data to the current map window
- Add indices to WFS tables (so Query > Find operations can be performed)
- WMS now defaults to using the co-ordinate system of the MapInfo map window rather than that of the WMS server.

- Descriptive coordinate system names are now available for display in addition to the EPSG codes.

With new and updated support for various raster and vector data formats including the latest DWG/DXF and DGN formats, shape files with M and Z values, ASRP v1.2, CSV files and the ability to export windows to GIF, TIFF LZW and more.

### More Value

Get more out of your investment via IT-friendly capabilities, usability improvements and new MapBasic support:

- Install on a central computer and use remotely via MS Terminal Services and CITRIX
- Multiple user support through silent and unattended installs
- Support for Oracle Workspace Manager including data versioning
- Usability enhancements including the ability to automatically copy XLS, TXT and CSV files for editing when opening them, larger Layer Control and SQL Select dialog boxes, a new default symbol setting for the Query > Find command, a new utility to find and delete duplicate rows of data in a table and many more
- MapBasic has been enhanced to support new features and capabilities, including new functions and statements for determining the nearest and farthest objects

### Typical Applications

- Site Selection
- Campaign Planning and Analysis
- Customer/Market/Competitive Analysis
- Demographic analysis
- Demand Modelling
- Network Planning
- Insurance Risk/Claims Analysis/Fraud Detection
- Crime Analysis
- Emergency and Transport Planning
- Property and Facilities Management
- Environmental Health and Pollution Control
- Customer Service

# MapInfo® Professional Version 8.0

## How does MapInfo Professional Version 8.0 compare with previous versions?

### New with MapInfo Professional Version 8.0

#### Platform support

Windows XP logo (Professional and Home support)

Windows 2000, Windows NT+SP6 and Windows 98SE works the same as previous logo Certified versions.

Support for Windows 2003 Server with Terminal Services and Citrix; support for silent and unattended installs added.

#### Data access

**OGC enhancements:** Proxy Server support (with passwords) for OGC Web Services; Preference Options added for time out settings for request, refresh WFS based on current window, import GML 2.1 support added; display user friendly projection names in WMS WFS dialogs; smart projection default added for WMS and WFS tables – use current map projection if available; control image resolution to improve print quality or improve download performance by reducing image resolution; ability to index WFS tables adds search and fast query capability.

**Data import:** import DWG/DXF (Autocad 2004 format), DGN v8 format, display ASRP 1.2 imagery, open ESRI grid data binary or text formats, Open CSV files directly; Open 3D ESRI Shape files with M&Z values directly.

**Database support:** Oracle 10G, Oracle 10G locator, MS SQL Server 2000, MS Access, IBM Informix.

**Spatial data support:** Oracle Spatial & Locator, MS SQL and Informix via Spatialware.

**Export window:** added more formats to export windows option: GIF, LZW TIFF and TIFF CCITT Group 4.

**Save Workspace:** save workspace as (MapInfo Workspace XML Format) MWS now includes label expressions, thematic expressions and query tables.

#### Mapping/data editing

MapInfo geographic objects can store the following:

The node limit now is: 134 Million nodes per single polyline or polygon object. Multi-polygon object limit is now: 20,648,881 polygons per record. Polygons: theoretical limit for number of segments per polyline is: 24,403,223 per polyline object; Multipoint object limit is 134,217,724 nodes per object.

Oracle object map verification enhanced to support object/map validation – detection of bowties and figure eights. Option to convert unsupported geometries during data upload (save as) to Oracle, Informix, and SQL Server. Improved performance when creating legends from/for a Live Table; support for Oracle Spatial Workspace Manager including (server side data versioning) (1) enabling/disabling versioning for an Oracle spatial Table (2) creating/deleting/merging/refreshing and resolving conflicts in Oracle workspace tables.

Option to save as MapInfo native to allow data editing when opening the following data files: CSV, XLS and TEXT.

#### User interface enhancements

File Open Dialog enhanced – clicking on a MapInfo location also updates the file format filter (WOR/TAB); Option to store default styles for the editing of layers, Layer Control has been enlarged to show more information. A new layer list preference provides the option to show more layer information using ToolTips.

More room for longer statements in SQL Select Dialog Box. From 254 characters to 1024 each. In addition, improvements made to usability; set default find style added to preferences; find selection in front window only added; New find custom symbols added in custom symbol library; mouse wheel support for browser window is now enabled.

Custom sort order for the legend items of individual value thematic maps.

Option to create bi-variate layer using transparent patterns.

Multi-column alignment options for legend frames.

Choice of thematic legend swatch sizes added.

Stream digitising added – auto node drop while drawing, (amount of nodes configurable). Support for orthogonal polygons added; sync window usability enhancements; utility to count and optionally remove duplicate rows in a table added; Distance Calculator enhanced functionality – find straight line distance to nearest/farthest lines/polygons plus improved performance; workspace resolver utility added – fix workspaces that do not have the correct file path or have missing tables; new thematic templates – provide improved cartographic options for thematic mapping.

#### Datum enhancements

Guernsey grid co-ordinate system  
Hellenic Geodetic Reference System  
Baltic Projections (Lithuanian and Latvian)

New Belgian co-ordinate system  
Additional UK national grid co-ordinate system

And more

#### GPS support

Geographic Tracker Tool upgraded – Garmin USB and Serial support added.

#### MapBasic enhancements

Registering .CSV files; custom sort order changes (set legend).

Converting custom MapInfo geometries into valid geometries for Oracle, IBM Informix, and MS SQL Server; creating legends on a live table; draw orthogonal polygon changes; enable alignment of thematic legends; enabling transparent patterns on same layer.

Export windows to additional formats; find nearest functionality commands added.

Increased choice on thematic swatches for cartographic legends.

MapBasic support for the increase in nodes, polygons, and polylines allowed – updated the variable type that stores the node count.

### MapInfo Professional 7.8 Added

#### Interoperability

**OGC Features:** WMS 1.1.3 Client and Get Feature info support; WFS 1.0 Web Service support.

#### Remote Database Support

**X,Y (point Data):** MS Access, SQL Server, Oracle, IBM Informix.

**Spatial (Map Objects):** Oracle 10G, 9iR2, 8i and locator, IBM Informix 9.4, SQL Server 2000 with SPW; Read/write of views for Oracle without being the schema owner.

**Imagery and Raster:** Open MrSid G3 and AirPhoto USA formats directly out of the box with MIPro v7.8.

**MapXtreme 2004:** Save MapInfo Professional Workspace as MapXtreme 2004 MWS format directly from MapInfo Professional.

**File Export:** Direct Export to CSV Format: export data from MapInfo Professional directly to an industry standard format.

**Updated GPS Utility:** Includes USB port support and improved documentation.

#### Mapping

Text Objects support 2048 characters; split line at a point; persist snap and thin values in each TAB file; draw line by distance supports DMS or decimal degrees, can create polylines and uses current map coord-sys. Line snap utility provides greater performance and supports polylines; new continuous trace mode during digitising; improved interface for adding new custom symbols, new MapInfo made custom symbols, included line style editor utility on the CD, new French RGF coord-sys support, new projection systems added for Sweden, Denmark, Australia and Israel.

#### Data Analysis

Dot density thematic supports square or circle shapes of any size; support of query tables in 3D Prism maps; distance calculator to automatically find the longest and shortest distance (straight line) between records in tow tables; spider graph to draw lines from point objects in one table to point objects of another table based on a common field; synchronise map windows to simultaneously zoom and/or pan in two or more map windows; search and replace feature to search for a string value in multiple columns within a table and replace it with another string value.

#### Sharing Results

Support for Cartographic scale: to create maps both as unitless as well as unit based scale i.e. 1:50 as well as 1" = 4mi; specify field type during MS Excel import; improved default range during import; option to specify small or large legends; updated MapInfo ProViewer – a freely downloadable workspace viewer program that enables other individuals in the organisation to view MapInfo Workspaces.

#### New and Enhanced MapBasic

New and enhanced MapBasic statements to support the new MapInfo Professional features.

### MapInfo Professional 7.5 Added

#### Remote Database Support

**X,Y (point Data):** MS Access, SQL Server, Oracle, Informix.

**Spatial (Map Objects):** Oracle 8i and 9i, Informix, SQL Server 2000 with SPW; automatic reading of Oracle Meta-Data for Make Table mappable menu option.

**Raster and Vector:** enhanced user interface for quick geo-referencing of raster images; interactive Vector file geo-referencing; MS Excel support now provides the ability to view any number of rows.

**OGC:** WMS Client; enhanced OSGB GML v2 file import with object style specification.

**Map Display:** enhanced region fill pattern with 100 new fill patterns. Enhanced custom symbols now supports high color and size. Improved auto scroll and smooth panning, hi-res 3D window; continues visible snap area, snap to centroids, optional cross hair mode, KKJ and JGD 2000 projection support.

**UI Enhancements:** 15 new menu shortcuts, keyboard support for panning and zooming, new options for Create Points.

**Data Editing:** move and offset support by fixed distance, new rotate selection: option to set an anchor point and degrees for rotation. New table buffer and voronoi into new table. New trim/extend utility, new undo supports large undo operations.

#### Data Publishing and Output

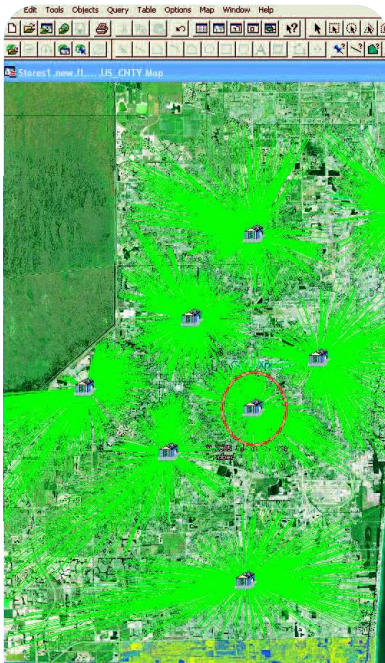
**Set Map Scale:** Set Map Scale of a Map Window frame sets the scale of a map within the window.

**Scale Patterns:** new scale patterns scales fill patterns on high resolution printers.

**Workspace Packager:** Utility to package workspaces with all related tab files into one directory.

**MapBasic:** New and enhanced MapBasic statements to support the new MapInfo Professional features. MapBasic v7.5 includes new sample code for HTML Image map, Mapping Wizard and other utilities that demonstrate product programmability.

**Call MapInfo today!**



Maximise the location component of your business!

#### UK and European Head Office

MapInfo Ltd  
Minton Place  
Victoria Street  
Windsor, Berkshire  
SL4 1EG, UK  
Tel: +44 (0)1753 848 200  
Fax: +44 (0)1753 621140  
europe@mapinfo.com  
www.mapinfo.co.uk

#### MapInfo GmbH

Tel: +49 6142 203 400  
Email: germany@mapinfo.com

#### MapInfo Benelux

Tel: +31 (0)183 642 950  
Email: benelux@mapinfo.com

#### MapInfo Sweden

Tel: +46 (0) 8 578 771 10  
Email: sweden@mapinfo.com

#### MapInfo Spain

Tel: +34 91 418 5083  
Email: spain@mapinfo.com

#### MapInfo Italy

Tel: +39 06 5483 2224  
Email: italia@mapinfo.com

**MapInfo**  
Be Location Intelligent™